

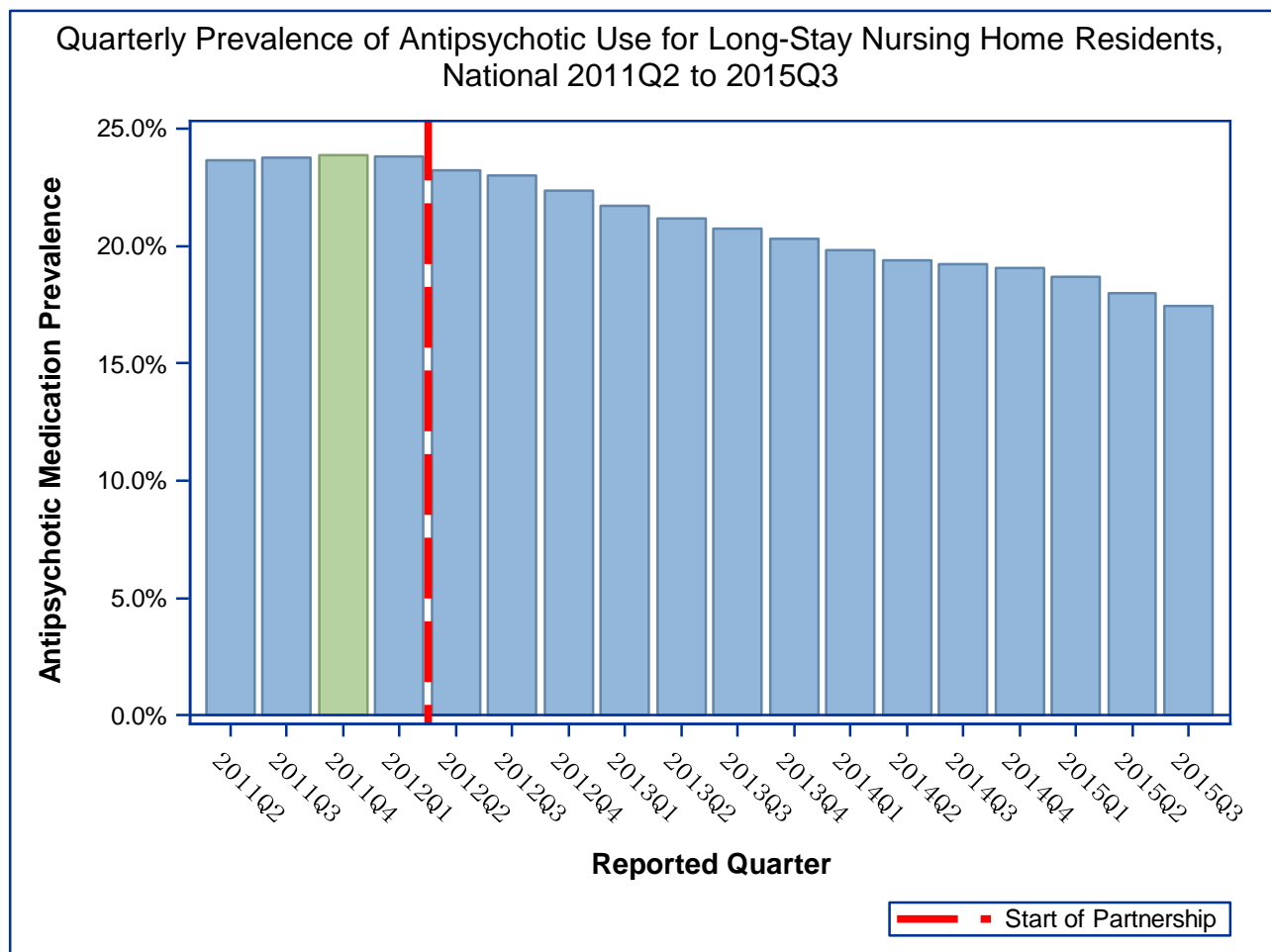
## National Partnership to Improve Dementia Care in Nursing Homes: Antipsychotic Medication Use Trend Update

The National Partnership to Improve Dementia Care in Nursing Homes is committed to improving the quality of care for individuals with dementia living in nursing homes. The Partnership has a mission to deliver health care that is person-centered, comprehensive and interdisciplinary with a specific focus on protecting residents from being prescribed antipsychotic medications unless there is a valid, clinical indication and a systematic process to evaluate each individual's need. The Centers for Medicare & Medicaid Services (CMS) promotes a multidimensional approach that includes; research, partnerships and state-based coalitions, revised surveyor guidance, training for providers and surveyors and public reporting.

CMS is tracking the progress of the Partnership by reviewing publicly reported measures. The official measure of the Partnership is the percentage of long-stay nursing home residents who are receiving an antipsychotic medication, excluding those residents diagnosed with schizophrenia, Huntington's Disease or Tourette's Syndrome. In 2011Q4, 23.9% of long-stay nursing home residents were receiving an antipsychotic medication. Since then, there has been a decrease of 27% to a national prevalence of 17.4% in 2015Q3. Success has varied by state and CMS region, with some states and regions having seen a reduction of greater than 25%.

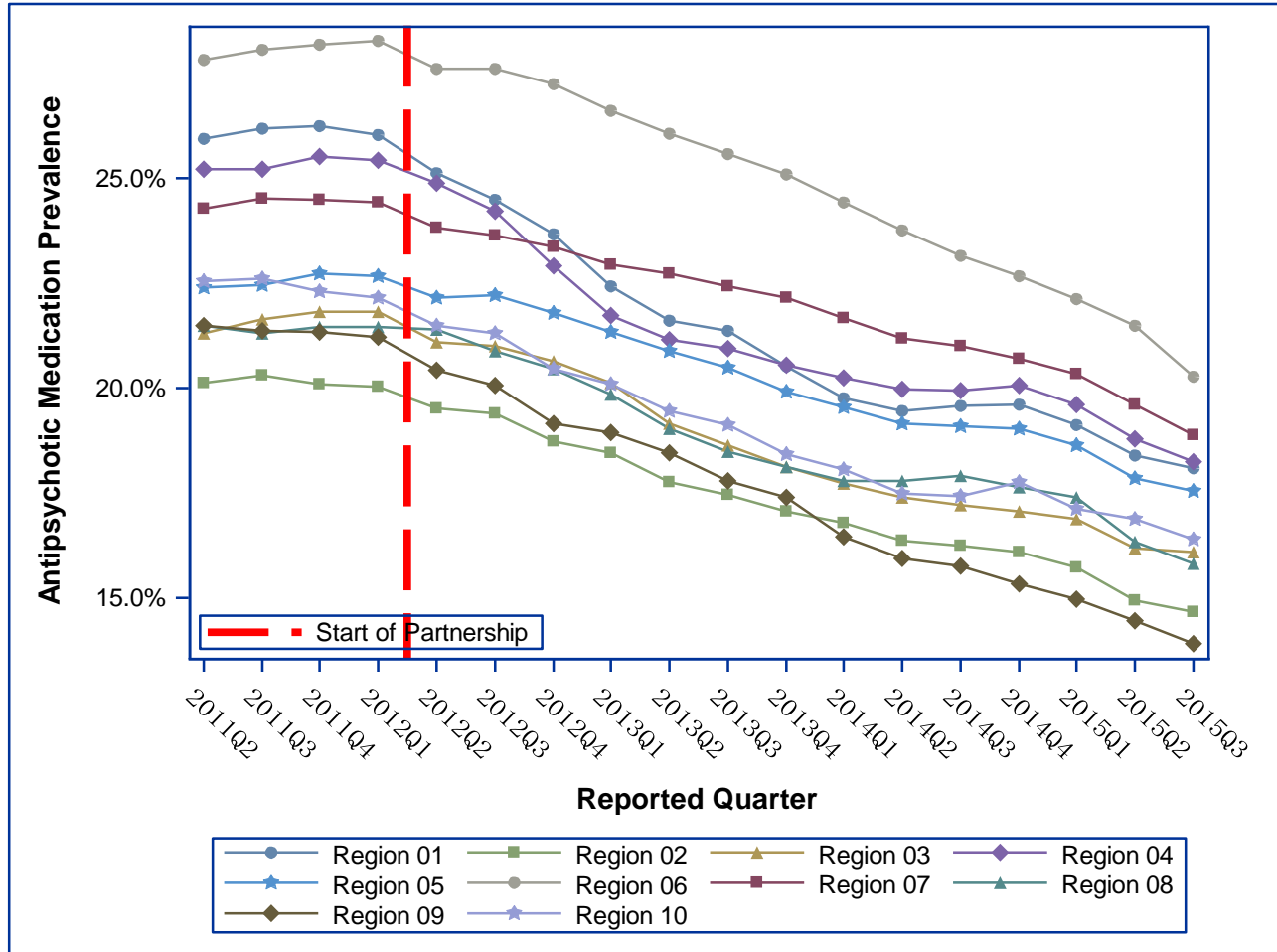
A three-quarter measure is posted to the Nursing Home Compare website at <https://www.medicare.gov/nursinghomecompare/search.html>. The long-stay measure on Nursing Home Compare, is the exact same measure as below, except each facility's score is averaged over the last three quarters in order to give consumers information on the past history of each facility.

For more information on this National Partnership, please send correspondence to [dnh\\_behavioralhealth@cms.hhs.gov](mailto:dnh_behavioralhealth@cms.hhs.gov).



CMS Region and State-specific data are displayed below. These data show the change in the single-quarter prevalence of antipsychotic medication use amongst long-stay residents since 2011Q2 and show the change since the start of the Partnership.

### Quarterly Prevalence of Antipsychotic Use for Long-Stay Nursing Home Residents, CMS Regions 2011Q2 to 2015Q3



Region	2011Q4	2012Q1	2012Q2	2012Q3	2013Q3	2013Q4	2014Q1	2014Q2	2014Q3	2014Q4	2015Q1	2015Q2	2015Q3	Percentage point difference (2011Q4-2015Q3)	% Change
National	23.9%	23.8%	23.2%	23.0%	20.8%	20.3%	19.79	19.4%	19.2%	19.1%	18.68	17.96	17.43	-6.44	-27.0%
Region 01	26.2%	26.0%	25.1%	24.5%	21.4%	20.5%	19.74	19.4%	19.6%	19.6%	19.12	18.40	18.09	-8.13	-31.0%
Region 02	20.1%	20.0%	19.5%	19.4%	17.4%	17.1%	16.78	16.3%	16.2%	16.1%	15.72	14.92	14.65	-5.43	-27.0%
Region 03	21.8%	21.8%	21.1%	21.0%	18.6%	18.1%	17.73	17.4%	17.2%	17.1%	16.88	16.16	16.08	-5.73	-26.3%
Region 04	25.5%	25.4%	24.9%	24.2%	20.9%	20.5%	20.24	20.0%	19.9%	20.0%	19.60	18.77	18.24	-7.27	-28.5%
Region 05	22.7%	22.7%	22.1%	22.2%	20.5%	19.9%	19.55	19.1%	19.1%	19.0%	18.63	17.84	17.53	-5.18	-22.8%
Region 06	28.2%	28.3%	27.6%	27.6%	25.6%	25.1%	24.40	23.8%	23.2%	22.6%	22.10	21.48	20.26	-7.92	-28.1%
Region 07	24.5%	24.4%	23.8%	23.6%	22.4%	22.1%	21.65	21.2%	21.0%	20.7%	20.32	19.60	18.88	-5.59	-22.8%
Region 08	21.4%	21.5%	21.4%	20.9%	18.5%	18.1%	17.77	17.8%	17.9%	17.6%	17.39	16.32	15.82	-5.63	-26.2%
Region 09	21.3%	21.2%	20.4%	20.1%	17.8%	17.4%	16.44	15.9%	15.7%	15.3%	14.96	14.45	13.89	-7.45	-34.9%
Region 10	22.3%	22.1%	21.5%	21.3%	19.1%	18.4%	18.05	17.5%	17.4%	17.8%	17.10	16.87	16.37	-5.92	-26.6%

## Quarterly Prevalence of Antipsychotic Use for Long-Stay Nursing Home Residents, States 2011Q2 to 2015Q3

State	2011Q3	2011Q4	2012Q1	2012Q2	2012Q3	2012Q4	2013Q1	2013Q2	2013Q3	2013Q4	2014Q1	2014Q2	2014Q3	2014Q4	2015Q1	2015Q2	2015Q3	Rank in 2015Q3 (lower=better)	Percentage point difference (2011Q4-2015Q3)	% Change
ALABAMA	27.4%	27.3%	27.5%	26.5%	26.0%	24.0%	22.9%	22.2%	22.3%	22.2%	22.1%	22.4%	22.0%	21.9%	21.69	20.58	20.10	45	-7.22	-26.4%
ALASKA	15.1%	13.7%	13.4%	13.0%	13.6%	12.4%	12.5%	11.8%	15.0%	12.8%	12.7%	14.8%	15.9%	16.4%	14.40	14.85	15.42	15	1.68	12.2%
ARIZONA	22.5%	22.7%	22.7%	21.7%	21.6%	20.9%	20.4%	20.2%	19.9%	20.7%	18.5%	17.5%	18.4%	17.7%	17.27	17.56	17.57	34	-5.17	-22.7%
ARKANSAS	27.0%	26.1%	26.1%	25.3%	25.8%	25.5%	25.1%	24.4%	23.8%	22.8%	21.7%	19.9%	18.8%	17.9%	17.62	17.03	16.90	27	-9.22	-35.3%
CALIFORNIA	21.6%	21.6%	21.3%	20.4%	20.1%	19.2%	19.0%	18.4%	17.7%	17.1%	16.3%	15.8%	15.5%	15.2%	14.73	14.21	13.63	8	-7.93	-36.8%
COLORADO	19.7%	19.9%	19.9%	20.3%	19.6%	19.4%	18.5%	17.5%	17.0%	16.4%	16.4%	16.1%	16.0%	15.9%	16.13	15.30	15.17	14	-4.73	-23.8%
CONNECTICUT	26.1%	26.0%	25.8%	25.0%	24.3%	23.2%	22.4%	21.6%	22.0%	21.0%	20.4%	20.3%	20.1%	20.5%	19.87	18.60	17.45	32	-8.59	-33.0%
DELAWARE	21.0%	21.3%	21.8%	22.6%	21.9%	20.9%	18.0%	16.8%	16.8%	15.5%	15.5%	14.7%	14.8%	14.8%	14.48	14.25	13.50	7	-7.79	-36.6%
DISTRICT OF COLUMBIA	20.0%	20.0%	19.4%	18.8%	19.4%	18.2%	17.4%	17.6%	15.9%	14.5%	14.8%	15.0%	14.7%	14.1%	13.13	12.78	13.01	4	-6.98	-34.9%
FLORIDA	24.3%	24.5%	24.6%	23.8%	23.5%	23.3%	22.7%	22.1%	21.8%	21.2%	21.2%	20.6%	20.6%	20.8%	20.30	18.89	17.59	35	-6.90	-28.2%
GEORGIA	28.4%	28.7%	28.7%	28.0%	27.1%	24.2%	22.7%	21.8%	21.4%	21.1%	20.6%	20.3%	20.1%	20.2%	20.08	19.86	19.52	41	-9.13	-31.9%
HAWAII	12.2%	12.5%	13.5%	15.3%	13.2%	11.7%	11.0%	11.4%	12.1%	11.6%	8.5%	9.1%	8.7%	8.4%	10.92	8.09	7.63	1	-4.82	-38.7%
IDAHO	25.7%	25.3%	26.4%	25.1%	24.5%	23.9%	23.1%	21.9%	20.7%	19.3%	19.3%	18.9%	18.4%	17.2%	18.72	16.84	16.29	23	-9.05	-35.7%
ILLINOIS	25.8%	25.7%	25.6%	25.3%	25.7%	25.5%	25.0%	25.2%	24.8%	24.0%	24.1%	23.7%	23.5%	23.1%	22.91	22.08	21.71	50	-3.99	-15.5%
INDIANA	23.6%	24.0%	24.1%	22.9%	23.1%	22.2%	21.7%	20.9%	21.0%	20.2%	19.9%	19.2%	19.0%	18.9%	18.35	17.12	16.38	24	-7.65	-31.8%
IOWA	22.3%	22.3%	22.0%	21.7%	21.1%	20.6%	20.2%	20.2%	19.9%	20.0%	19.7%	19.3%	19.2%	18.9%	18.26	17.57	16.95	28	-5.39	-24.1%
KANSAS	26.5%	26.1%	26.1%	25.2%	25.3%	25.1%	24.2%	23.9%	23.5%	23.0%	23.1%	22.8%	23.2%	22.3%	22.19	20.93	20.40	47	-5.71	-21.9%
KENTUCKY	25.2%	26.0%	26.0%	25.2%	24.4%	23.1%	21.9%	22.0%	21.8%	21.6%	21.2%	20.9%	21.1%	21.1%	21.36	20.12	19.86	43	-6.12	-23.5%
LOUISIANA	29.9%	29.7%	29.7%	29.1%	28.9%	28.6%	27.8%	27.0%	26.6%	26.5%	25.5%	25.1%	25.0%	25.0%	24.88	23.69	22.25	51	-7.46	-25.1%
MAINE	26.7%	27.2%	26.9%	25.9%	25.1%	24.2%	22.6%	21.7%	21.3%	20.1%	18.5%	18.2%	19.1%	19.3%	18.87	18.33	18.13	36	-9.11	-33.4%
MARYLAND	19.8%	19.8%	19.6%	18.5%	17.8%	17.7%	17.3%	16.7%	15.6%	15.9%	15.9%	15.8%	15.4%	14.8%	15.03	14.33	13.97	10	-5.82	-29.4%
MASSACHUSETTS	26.7%	26.7%	26.6%	25.4%	25.1%	24.5%	22.9%	22.2%	21.8%	21.2%	20.6%	20.2%	20.1%	19.9%	19.44	18.93	18.93	37	-7.79	-29.1%
MICHIGAN	16.0%	16.4%	16.4%	15.8%	16.0%	15.5%	14.9%	14.4%	14.1%	13.9%	13.7%	13.4%	13.3%	13.7%	13.62	13.36	13.20	5	-3.19	-19.5%
MINNESOTA	19.0%	19.0%	18.8%	18.1%	18.0%	18.0%	17.9%	17.3%	16.7%	16.6%	16.0%	15.3%	15.1%	14.6%	14.50	13.54	13.80	9	-5.23	-27.5%
MISSISSIPPI	26.8%	26.6%	26.3%	26.6%	26.1%	25.3%	24.7%	24.4%	25.3%	24.3%	23.8%	23.0%	23.0%	23.1%	22.73	21.92	21.49	49	-5.09	-19.2%
MISSOURI	26.0%	26.1%	26.0%	25.3%	25.2%	24.9%	24.6%	24.4%	23.7%	23.1%	22.2%	21.6%	20.8%	20.7%	20.55	20.10	19.33	39	-6.82	-26.1%
MONTANA	22.0%	21.5%	21.5%	19.5%	19.7%	19.5%	19.7%	19.2%	18.1%	17.2%	16.9%	16.3%	17.0%	16.9%	16.24	15.48	14.97	13	-6.51	-30.3%
NEBRASKA	22.4%	22.3%	22.9%	22.6%	22.6%	22.9%	22.5%	22.2%	22.8%	22.7%	22.0%	21.4%	21.7%	21.6%	21.00	20.45	19.37	40	-2.96	-13.3%
NEVADA	20.7%	20.3%	20.5%	21.1%	19.7%	20.2%	20.1%	20.4%	19.9%	19.7%	19.1%	18.8%	19.3%	18.4%	17.91	17.47	15.71	16	-4.56	-22.5%
NEW HAMPSHIRE	25.4%	25.5%	25.1%	24.0%	23.8%	23.7%	22.7%	21.1%	21.2%	20.1%	18.8%	18.4%	18.6%	18.8%	17.67	16.87	17.53	33	-8.00	-31.3%
NEW JERSEY	18.2%	17.9%	17.8%	17.5%	17.4%	17.1%	16.6%	15.9%	15.4%	15.1%	14.5%	14.2%	14.3%	14.1%	13.67	13.16	12.87	3	-5.03	-28.1%
NEW MEXICO	22.3%	21.7%	22.0%	20.0%	20.4%	22.2%	20.3%	20.7%	17.7%	18.1%	19.5%	17.3%	16.9%	16.1%	15.81	17.19	16.19	21	-5.47	-25.3%
NEW YORK	21.6%	21.3%	21.4%	20.8%	20.6%	19.7%	19.5%	18.9%	18.7%	18.2%	18.0%	17.6%	17.4%	17.3%	16.94	16.04	15.74	17	-5.57	-26.1%
NORTH CAROLINA	20.8%	21.4%	21.3%	20.7%	19.9%	18.0%	16.5%	16.0%	15.8%	15.6%	15.0%	14.8%	15.4%	15.3%	14.91	14.81	14.71	12	-6.74	-31.4%
NORTH DAKOTA	21.4%	21.3%	21.2%	20.6%	20.4%	19.8%	19.1%	18.5%	18.3%	18.7%	18.0%	18.3%	19.0%	19.3%	19.11	19.11	19.10	38	-2.20	-10.3%
OHIO	25.0%	25.4%	25.4%	25.0%	24.8%	24.5%	24.1%	23.3%	22.7%	22.0%	21.6%	21.6%	21.8%	22.0%	21.28	20.37	20.09	44	-5.36	-21.1%
OKLAHOMA	26.8%	27.3%	27.5%	27.3%	26.6%	25.5%	23.0%	22.7%	22.3%	21.7%	21.5%	20.9%	20.7%	21.0%	20.19	19.88	19.59	42	-7.73	-28.3%
OREGON	21.0%	21.5%	21.3%	20.0%	19.9%	19.2%	19.1%	18.6%	18.8%	18.3%	18.4%	17.1%	17.8%	18.5%	16.79	17.34	17.37	31	-4.12	-19.2%
PENNSYLVANIA	22.1%	22.3%	22.2%	21.7%	21.7%	21.1%	20.5%	19.4%	19.2%	18.8%	18.3%	17.9%	17.6%	17.6%	17.29	16.57	16.66	26	-5.64	-25.3%
RHODE ISLAND	23.8%	24.0%	23.9%	23.1%	21.7%	20.2%	20.3%	19.3%	18.4%	17.5%	16.9%	16.5%	17.0%	17.2%	17.30	17.00	17.00	30	-6.99	-29.1%
SOUTH CAROLINA	20.5%	20.7%	20.6%	20.7%	20.2%	18.3%	17.2%	16.9%	15.9%	15.5%	15.3%	15.6%	15.3%	15.5%	14.56	14.25	14.30	11	-6.40	-30.9%
SOUTH DAKOTA	21.8%	21.5%	21.5%	21.3%	21.4%	20.5%	20.0%	18.8%	18.1%	18.6%	18.0%	18.1%	18.2%	18.4%	18.06	17.66	16.42	25	-5.11	-23.7%
TENNESSEE	29.5%	30.0%	29.3%	29.0%	27.7%	27.2%	25.0%	23.9%	24.0%	23.4%	23.1%	22.7%	22.5%	22.8%	21.57	20.56	20.29	46	-9.67	-32.3%
TEXAS	28.5%	28.8%	28.9%	28.2%	28.3%	28.0%	27.9%	27.3%	27.0%	26.5%	25.7%	25.3%	24.6%	23.8%	23.17	22.48	20.86	48	-7.99	-27.7%

## Quarterly Prevalence of Antipsychotic Use for Long-Stay Nursing Home Residents, States 2011Q2 to 2015Q3

State	2011Q3	2011Q4	2012Q1	2012Q2	2012Q3	2012Q4	2013Q1	2013Q2	2013Q3	2013Q4	2014Q1	2014Q2	2014Q3	2014Q4	2015Q1	2015Q2	2015Q3	Rank in 2015Q3 (lower=better)	Percentage point difference (2011Q4-2015Q3)	% Change
UTAH	24.7%	27.1%	26.9%	27.1%	26.3%	26.4%	25.0%	24.5%	23.6%	21.7%	21.7%	23.1%	22.8%	21.2%	20.44	16.60	15.82	18	-11.29	-41.7%
VERMONT	26.1%	25.4%	25.7%	26.2%	24.9%	23.4%	20.3%	20.2%	20.2%	18.8%	18.2%	18.0%	19.2%	18.9%	18.76	17.64	16.22	22	-9.18	-36.1%
VIRGINIA	22.8%	23.0%	22.9%	21.8%	21.9%	22.1%	22.1%	21.0%	20.5%	19.7%	19.0%	18.2%	18.5%	18.4%	18.06	17.25	16.97	29	-6.08	-26.4%
WASHINGTON	23.0%	22.3%	21.8%	21.7%	21.6%	20.6%	20.2%	19.7%	19.1%	18.6%	17.8%	17.5%	17.0%	17.6%	16.98	16.74	15.87	19	-6.46	-28.9%
WEST VIRGINIA	20.3%	20.5%	21.5%	20.4%	20.7%	20.4%	19.8%	19.0%	18.0%	16.5%	16.1%	16.6%	16.2%	16.4%	16.74	15.97	16.10	20	-4.40	-21.5%
WISCONSIN	18.7%	19.0%	18.9%	18.9%	19.0%	18.0%	17.7%	17.4%	16.8%	16.3%	15.4%	14.6%	14.2%	14.3%	13.91	13.58	13.21	6	-5.84	-30.7%
WYOMING	18.4%	16.8%	16.9%	19.4%	16.8%	17.5%	17.0%	16.5%	17.2%	17.9%	16.5%	15.6%	15.1%	14.6%	13.95	12.92	12.42	2	-4.40	-26.2%